

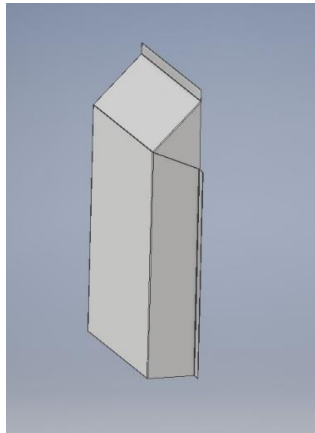
Local Manufacturer Provides Quick Bridge Repairs

What do you do if you receive a phone call that the Grand Haven drawbridge needs a repair? Better yet, what do you do when MDOT trucks drive to your facility and ask for help? This recently happened to Josh Vink, owner of Refab in Grand Haven. Refab is a local metal fabricator, specializing in Machining, Laser Cutting, Turret Punching, Forming, Welding, Finishing and Assembly.

On a snowy February day, MDOT trucks arrived at Refab with a sketch of a shroud needed to prevent the bridge's emergency generator from ingesting snow. The previous week's severe cold snap had prevented completion of a project to replace powerlines supplying the bridge and the emergency generator had to be continuously ran. It was found that snow was being drawn into the engine of the generator, and an immediate solution was required to keep the generator operational.

Within a few hours of MDOT's arrival at Refab, the bridge repair crews rough sketch was turned into a CAD model, CNC programs created and the shroud was laser cut and formed.

Refab's typical manufacturing capabilities are used to supply other area manufacturers with metal components and assemblies used in their products. The repair part for the bridge was an opportunity for the team at Refab to use their expertise to ensure a reliable commute across the bridge. Local capabilities and talent are exactly why manufacturing matters in our community!



CAD Model developed from a field drawing.



Using Teamwork to CNC Form the laser cut components.



Installed shroud on the drawbridge's building housing the emergency generator